

AURELIUS TOWNSHIP

2019-2024 5-YEAR RECREATION PLAN

DRAFT PREPARED BY:
PREIM GROUP LLC

TABLE OF CONTENTS

Community Description

Administrative Structure

Recreation Inventory

Description of Planning Process

Description of Public Input Process

Goals & Objectives

Action Program

Post Completion Self Certification Report

Appendix:

2018 Community Survey

Notices of Public Meetings/Public Hearings

Budget and Revenue Sheet

Trails/Wayfinding Map

Aurelius Township 5-Yr Parks & Recreation Capital Improvement Program

COMMUNITY DESCRIPTION

This Recreation Plan has been developed for Aurelius Township for the five-year period from 2019 through 2024. It generally includes the jurisdiction associated within the Township boundaries and includes direct collaboration with Ingham County on a range of park/trails objectives and facilities.

Demographic Profile (Social Characteristics)

For purposes of this Plan and for similar reference purposes, the demographic profile is that for Aurelius Township alone. Table 1 provides the breakdown of population over the last 10 years through the U.S. Census, with comparison to surrounding units of government.

Table 1 - Population

Community	2000	2010	% Change
Aurelius Twp.	3,318	3,525	+6.2%
Delhi Charter	22,496	25,877	+15.0%
Onondaga Twp.	2,958	3,158	+6.8%
Vevay Twp.	3,605	3,537	-1.9%
Eaton Rapids Twp.	3,821	4,113	+7.6%

As presented in Table 1, Aurelius Township has been growing fairly consistently with abutting Townships south (Onondaga) and west (Eaton Rapids), but at a slower pace than the more urban Delhi Township to the north. Vevay Township to the east may have seen reduction based upon annexation of land into the City of Mason. According to 2016 estimates recently released by the U.S. Census Bureau Aurelius Township has grown 22%, adding 771 new residents and bringing its total population to 4,299. This increase is somewhat connected to the build-out of the Columbia Lakes subdivision. It remains to be seen what the growth rate will be in the actual 2020 census.

Table 2 - Age Breakdown (2010 Census)

	0-24	25-49	50-64	65 & over
Aurelius Twp.	1,103 (31%)	1,089 (31%)	878 (25%)	455 (13%)

As presented in Table 2, the four age categories reflect a Township with a very balanced population, with young families and older residents aging in place. Given that there are not multiple family or senior housing developments within its boundaries likely supports a balanced approach to providing both passive and active recreational facilities.

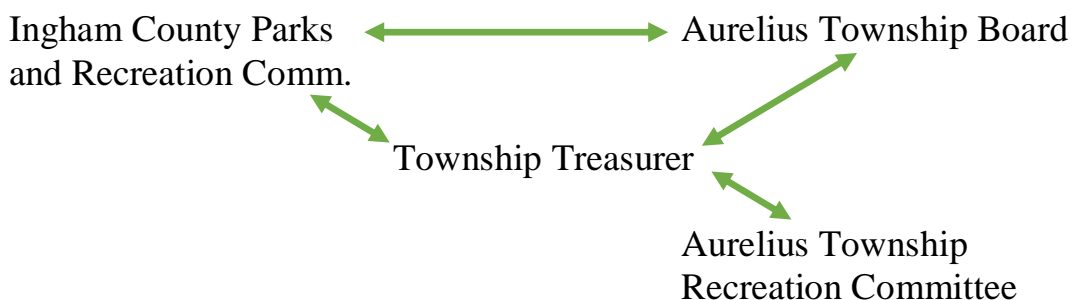
County/Regional/Statewide Connection

Aurelius Township is fortunate to be part of a much larger recreational effort within Ingham County, as well as regional and statewide connections. The Ingham County Trails and Parks Comprehensive Report (Adopted March 22, 2016) provides for the broad range of facilities within the county and connections to the much larger region in terms of non-motorized systems. It references efforts undertaken by the Tri-County Regional Planning Commission (Clinton, Eaton and Ingham Counties) focused on “Greening Mid-Michigan” and a 2015 University Region Non-Motorized Plan completed by MDOT.

ADMINISTRATIVE STRUCTURE

A three-member Recreation Committee was formed to undertake this plan, working with the Township’s Planning Consultant to develop a draft that would be presented to the Aurelius Township Board for local approval. The Committee includes the Township Supervisor, Township Treasurer and one member of the public. The Township Treasurer serves as the liaison from the Committee to the Township Board and to the County Parks and Recreation Commission. The five-member Township Board, which undertook this project through a grant from the Ingham County Parks and Recreation Commission, serves as the final decision maker and oversees the funding of park improvements.

The following flow chart provides the linkages associated with this process.



The funding for park maintenance and improvements is through a separate Fund (#408). The Township Board appropriates funds through the General Fund, with transfers into this Park Fund where needed. The Township also is a listed participant in revenues established by the Ingham County Parks Millage, based upon population and potential status in the small community category. Copies of budgets and revenues are presented within the appendix.

Grant History

This 5-year Recreation Plan was funded through a grant from the Ingham County Parks and Recreation Commission through their Parks & Trails Program. This was a 50/50 grant with the Township contribution of \$3,875 toward this effort. A prior 5-Year Recreation Plan was completed in 2009, with funding solely by the Township. An original grant (\$98,000) from the Michigan DNR was awarded in 1993 (#BF93-132) to develop Glenna Droscha Park.

RECREATION INVENTORY

Aurelius Township is fortunate to have not only two distinct parks of its own, but Ingham County facilities (William Burchfield Park and McNamara Landing), coordinated non-motorized facilities (bike lanes) and other public and private recreational resources. The following provides an overview of each facility:

Glenna Droscha Park is located at the Township Hall site, generally at the intersection of Barnes Road and Aurelius Road. This 20-acre community park includes the following:

- 1 half mile paved walking path with benches
- 1 95-person pavilion with 12 picnic tables and 2 grills
- 1 children's playground
- 2 softball/baseball diamonds
- 2 practice soccer fields
- 1 half basketball court
- 1 sledding hill
- 1 108-space paved parking lot



1 three-season accessible restroom facility

This park facility balances both active and passive recreational needs, with open space and connection to historical and educational pursuits through the Township Hall and the Library.

Columbia Creek Park is located on Curtice Road between Gale and Waverly Roads. This approximately 17-acre community park includes the following:

- 1 50-person pavilion with tables
and 1 grill
- 1 children's playground
- 1 gravel parking lot
- 1 primitive restroom facility

This facility is for active pursuits without accessibility for those in need. It is primarily open space, with mature trees and a bridge crossing the creek.



County Partnership has been established on a wide range of facilities, with an expanded non-motorized program of bike lanes (paved shoulders) connecting the two parks with other park facilities in the Township as well as county wide facilities. Efforts are now underway to further expand this connection through a wayfinding/signage program, establishing the two Township parks as destinations within a much larger county-wide park system. This brings together the Ingham County Parks and Recreation Commission, the Ingham County Road Department and the Michigan Department of Transportation, with the intent to further connect county facilities into a regional and statewide network of parks and trails.

The County also manages William Burchfield Park and McNamara Landing. McNamara Landing is located within the Township boundaries (NW corner of the Township). These facilities are maintained by the Ingham County Parks Commission, with the larger Burchfield Park encompassing a total of 540 acres along the Grand River. Burchfield Park includes both hiking and water trail options.

Aurelius Elementary School (Mason Public Schools) is located in the northern portion of Aurelius Township. This 17-acre site includes a walking path and playground equipment, as well as open fields used for softball,

soccer or general use. It is connected to other park facilities through bike lanes along Aurelius Road.

In addition to the listed public facilities, there are private recreational resources:

1. Branson Bay Golf Course accessible from Columbia Road. The Golf Course shares a boundary with Columbia Creek Park in Section 7 of the Township.
2. Mid-Michigan Land Conservancy 130-acre Bunker Nature Preserve is located on Bunker Road. It is four miles southwest of Mason, in section 23 of the Township. The public can enjoy its wetlands, prairie vegetation, woods, trail and abundant wildlife.



Prairie at Bunker Natural Area

DESCRIPTION OF PLANNING PROCESS

Aurelius Township has undertaken this 5-Year Recreation Plan through a grant from the Ingham County Parks and Recreation Commission. In November of 2014, Ingham County voters approved a millage to support a county-wide system of parks and trails. This funding is assisting the Township in further planning and development of its own facilities, with the intent of connecting such facilities to the county-wide parks and trails system. This county-wide system is further aided through connection to regional and statewide recreation facilities.

Prior to receiving this grant, the Township had undertaken a survey of residents in 2017 in order to gain input on existing utilization and desired improvements. As part of this new 5-Year Recreation Plan, an expanded survey was completed in 2018, with results tabulated in early 2019. A supplemental survey of residents from the Columbia Lakes development was conducted to compare overall results with input from this predominantly younger population. This resulted in similar findings and supported the direction identified in the prior surveys.

With this direction defined by the survey results, a series of goals and objectives was developed to guide the process in terms of a specific action program. This program identifies potential projects that could be undertaken over the next five-year period, with many projects able to be financed through Township funding and/or matching grants with Ingham County or through the State of Michigan.

Prior to finalizing this plan, a draft was reviewed by the Recreation Committee and forwarded to the Township Board for their input. A 30-day review period was initiated. A public hearing was held (minutes included within the appendix) prior to local adoption of the Plan by the Township Board. The plan was also submitted to local, county and regional entities for their review.

DESCRIPTION OF PUBLIC INPUT PROCESS

Aurelius Township undertook several different approaches to gaining public input during the development of this Recreation Plan. Initially, it conducted a community survey of residents in 2017. While this offered a lower than

anticipated rate of response, the consistency of responses in terms of priority for park development was supportive of Township action over the prior few years.

A second survey of residents took place in the fall of 2018, using the same written response format, but slightly modifying the approach in terms of a sample using a postage-paid mail survey. This was in addition to responses received from posting on the Township's website and having surveys available at the Township Hall. This increased the rate of response while also gaining more input from a wider age range.

Another step was taken to both increase the response rate and achieve a better input from younger residents through attendance at the December 4, 2018 meeting of the Columbia Lakes Association, the largest residential development in the Township. A brief presentation was made by Township Staff and the Township Planning Consultant to explain the process for developing the new 5-Year Recreation Plan and more recent efforts at development of the county-wide non-motorized trail/bike lane program.

Once the survey results were analyzed, the draft plan was developed utilizing the preferred direction of the responses (See Goals & Objectives), leading to the 5-Year Action Program. This draft plan was presented to the Recreation Committee for review, and upon their recommendation, was forwarded on to the Township Board for their review and approval. As part of this final process, a public hearing was held by the Township Board to gain additional public input.

ANALYSIS OF SURVEY RESULTS

2017 SURVEY: A survey of patrons (both residents and non-residents of the Township) was conducted in 2017, with 37 total responses. The majority of responses (29) were from people 50 years and older. Use of the two community parks (Glenna Droscha and Columbia Creek) showed regular use (15), occasional use (15) and use once or twice a year (7). Some patrons utilized both facilities, with Glenna Droscha listed for 32 visits and Columbia Creek for 15 visits.

Each park has its own unique makeup, with Glenna Droscha having more improved facilities (baseball fields, paved walking path) and connection to the Township Hall and Library. The highest use categories for Glenna Droscha were walking, picnics, dog walking and use of the playground and baseball fields. Columbia Creek is a more rural location, with the majority citing the enjoyment of nature and walking activity.

When asked what improvements should be considered at Glenna Droscha, the responses included a longer walking path, need for another pavilion, more playground equipment, more benches and a signage program linking the facility to other locations. When asked what improvements should be considered at Columbia Creek, the responses included an updated restroom, improved walking path, more benches and a signage program linking the facility to other locations. When asked in general what other recreational amenities are needed in the Township, more bicycle lanes topped the list.

Both Glenna Droscha Park and Columbia Creek Park fit under a small “Community Park” category, with 20 acres and 17 acres respectively. Based upon a 2010 Census of 3,525 residents, the Township provides 38 acres of recreation land/parks for an average of approximately 10.8 acres per 1,000 residents. This exceeds the recommended acreage (5 to 8 acres per 1,000) so the intent will be to continue to make improvements to existing facilities and then to connect the two parks to other recreational facilities through on-road bike lanes and a wayfinding signage program.

2018 SURVEY: An additional survey was conducted in the fall of 2018. The intent was to gain a better response rate as well as to slightly modify the survey to determine whether the respondents were a balanced sample in terms of their location and their age. A supplemental survey of residents within the Columbia Lakes development was used to compare the input of a younger resident/family population to the survey results.

This primary survey revealed a better cross section of the community, with 117 responses fairly balanced by their location of residence within the Township. Of those residents responding to this location question (96), roughly 1/3 lived in the NW quadrant, 1/3 in the NE quadrant and the remaining third split between the SW and the SE quadrants. This reflects the general population distribution of residents, with higher population concentrations on the northern tier of the Township.

The supplemental survey of residents in Columbia Lakes (26 responses) added to the totals within the NE quadrant of the Township.

The age distribution of responses (Question 2) was improved over the 2017 survey, with 40 responses (34%) from those under age 50. Question 3 asked about the respondent's knowledge and satisfaction of the park system, with 83% knowing about both parks and the vast majority believing they are well maintained and a safe environment for their use. Question 4 sought input as to which parks were visited, with 72% referencing Glenna Droscha Park and 28% indicating they had visited Columbia Creek Park. The respondents were also balanced in terms of the frequency of visits (Question 5), with 55% stating occasional use, while the balance were evenly divided by either regular use or just once/twice a year. The supplemental survey for Columbia Lakes provided the perspective of 85% (22 responses) from those under age 50 with only 27% having much knowledge of the facilities and only half (13 responses) having any thoughts related to maintenance and safety. This reinforced the benefit of holding a separate meeting with those residents to better inform them of the facilities.

Questions 6 and 7 related to use of Glenna Droscha Park, with the first being the purpose for the visit, with the highest response being walking, followed by dog walking, and running, with these closely aligned to the walking trail feature in the park. This was followed by use of the baseball and softball fields. The next highest responses related to use of the playground and for picnics and family gatherings. The supplemental survey of Columbia Lakes revealed a similar balance of usage, with walking, playground and baseball being the three highest use categories. Enjoyment of nature, bicycling and basketball rounded out those with at least 10 responses. Given the 222 responses, it is clear that residents enjoy multiple facilities present at this park location. Desired improvements were wide ranging, with a longer walking path and an additional pavilion topping the list. Other requests were for more benches and picnic tables, as well as improved signage linking this park to other park facilities. The supplemental survey of Columbia lakes residents desired a longer walking path, more playground equipment and a community garden.

Questions 8 and 9 related to use of Columbia Creek Park, with the highest responses being the enjoyment of nature and walking. Picnics and family gatherings were also listed as well as dog walking. These responses were very consistent with the passive nature of this park

Preferred improvements referenced the need for an updated restroom facility, and more benches and picnic tables. Again, the respondents cited the need for additional signage related to other park facilities. The supplemental survey of Columbia Lakes residents made it fairly clear that they were either not aware of the Columbia Creek Park or were infrequent users.

Question 10 was more open-ended in terms of the types of facilities the public wanted to see in the Township, with the vast majority referencing more bike lanes. It is clear from the survey results that residents are quite happy with the current park facilities and recent efforts to coordinate their use with bike lane connections within the Township and to a regional system are well appreciated. The supplemental survey of the Columbia Lakes residents supported the need for more bike lanes.

Copies of notices and minutes from various meetings, including the public hearing, are included within the Appendix to this document.

GOALS & OBJECTIVES

The 2009 Recreation Plan listed three primary goals for the Township:
(1) ~~To~~ Increase opportunities through new facilities, improvements to existing facilities and increased awareness of the facilities in and around the Township; (2) Begin a framework for non-motorized trails linking to Delhi Township, Mason and Eaton Rapids; (3) Build the capacity of the Township's facilities through community contribution and grant funding.

This plan has largely been implemented through the assistance of the Ingham County Parks & Recreation Commission and the County's Regional Trails and Parks Millage Fund. In addition, the Ingham County Road Department has funded expanded paved shoulders/bike lanes along segments of Aurelius Road, Barnes Road and Columbia Road. Community organizations, such as the Mason Softball league and the Mason United Soccer Association have funded improvements to the facilities that they utilize, such as backstops and dugouts for softball/baseball and field nets for soccer. The following projects have been funded or are in the process of grant application:

2016 Repair and Resurfacing of Walking Path/Parking Lot – Glenna Droscha Park (Trails and Parks Grant)

2017 5-Year Recreation Plan (Trails and Parks Grant)

2018 Ingham County Parks & Recreation Commission Wayfinding/Signage Program (MDOT TAP Grant)

MASTER PLAN: In addition to the 5-Year Recreation Plan, in 2018 Aurelius Township adopted an update to their 20-year Master Plan. Utilizing the 2010 Census (See Community Description/Demographic Profile) and some more current and localized data, this provided a snapshot of the growing population in the Township. It also provided a breakdown by age categories, with reference to today's generation of Baby Boomers (1946-64), Gen Xers' (1965-1980) and Millennials (1981-2000). Recent national population studies have put these numbers at 74 million baby boomers, 66 million Gen Xers' and 71 million millennials.

Thus, planning for recreational opportunities can become quite difficult considering the range of activities for these varying age groups. Through conducting the community survey, it was possible to gain a better understanding of the direction for future park improvements, including the emphasis on more active pursuits, such as the county-wide trails program.

The following Goals & Objectives are presented based upon both passive and active recreational facilities:

GOAL#1: Continue coordination of all Township recreational activities between community groups, local government, Ingham County and the State of Michigan.

Objective 1.1: Provide current data/mapping to Township residents on the facilities available in the Township and non-motorized connections to facilities within Ingham County and the surrounding region. (Active recreation for children and young/middle age adults)

Objective 1.2: Promote activities at each Township Park for varying age groups, with benefit derived from utilizing the Library/Township Hall as an informational resource and starting location. (Passive recreation for seniors and those with disabilities)

GOAL#2: Continue to leverage donations and grant funding in order to ensure future improvements as generational demands change over time.

Objective 2.1: Utilize and prioritize annual budget allocation for parks and recreation, emphasizing the use of dollars that can be leveraged with other funding sources for direct park improvements and trail connections.

Objective 2.2: Emphasize and support the use of Ingham County Trails and Park Grants (Millage) and other County (Road Department) and State funding (MDNR/MDOT) on making connections between the Township facilities and those County facilities within the Township (William M. Burchfield Park/McNamara Landing), within the County, and within our region of the State.

ACTION PROGRAM

Objective 1.1 & Objective 1.2: Create a covered map board of facilities in the Township with the heading “Facilities for Everyone,” with one side emphasizing active recreation and the other more passive recreation. Position this near the entrance to the Township Hall/Library where most residents would see it and could access more information inside the building.

Objective 1.1 and Objective 1.2: Create a handout available inside the building that provides both new and current residents with contact information related to activities and organizations specific to both active and passive recreation. This would include Ingham County Parks, the school systems (Aurelius Elementary), community organizations (baseball/softball leagues, soccer leagues, senior programs, etc.), churches, or similar entities that would assist in maximizing access to all types of activities and programs.

Objective 2.1 & Objective 2.2: Prepare an outline for a Capital Improvement Program, listing the annual budget allocation and a complete listing of potential projects. This listing would include all parks related projects, with these defined into three categories of Glenna Droscha Improvements, Columbia Creek Improvements and Trail Connection Improvements.

The following Project list is included as part of this Action Program:

Glenna Droscha Park:

Acquire 4-acre parcel (Taylor Property) on east side of the Township property and additional adjoining parcels, as they become available.

Extend walking path to south entrance (expanded loop following acquisition)

Add exercise stations along walking path

Construct a new ADA pavilion (24’ x 50’) with tables and grills

Construct a new ADA playground (40’ x 50’ area)

Construct a new building for indoor basketball, pickle ball and other activities (Add pickle ball court option to outdoor basketball court area)

Install more drainage on north ball diamond

Columbia Creek Park:

Construct a small pavilion (24' x 30') on south side of creek

Construct a rustic walking path on north side of park

Construct a half basketball court with pickle ball option

Installation of new restroom facility

Add new picnic tables

Install new fencing and repair fencing where needed

Trail Connections:

Complete the current (2018) Ingham County Trails and Parks System On-road Wayfinding Signage program

POST COMPLETION SELF CERTIFICATION REPORT

AURELIUS TOWNSHIP PARKS

Ingham County, Michigan

*Enjoy the Quiet Simplicity of a Picnic or
Spend the Afternoon Looking for Wildflowers in the Open Fields.*

Aurelius Township has two parks. **Glenna Droscha Park** is located on Aurelius Road at the Aurelius Township Hall.

This accessible park features:

- ☀ 20 acres with 2 acres of open space
- ☀ 1 half-mile paved walking path with benches
- ☀ 95-person pavilion with 10 picnic tables; 2 child-sized picnic tables and 2 grills
- ☀ 1 children's playground
- ☀ 2 softball/baseball diamonds
- ☀ 2 soccer practice fields
- ☀ 1 sliding hill
- ☀ 1 half-court basketball court
- ☀ 108-space paved parking lot
- ☀ Three season restroom facility
- ☀ Active/passive recreation area



Our second park is **Columbia Creek Park** located on Curtice Road between Gale and Waverly Roads.

This rustic setting park features:

- ☀ 16.75 acres with 5 acres of open space
- ☀ 50-person picnic pavilion with tables and 1 grill
- ☀ Playground equipment
- ☀ Creek with bridge
- ☀ Artesian well
- ☀ Mature trees
- ☀ Open fields
- ☀ Gravel parking area
- ☀ Primitive restroom facility
- ☀ Active recreation area

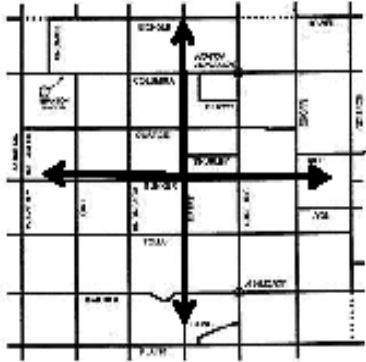




Aurelius Township Parks and Recreation Survey 2018

1. In which section of Aurelius Township do you live?

☐ NW ☐ NE ☐ SW ☐ SE ☐ Non-resident



2. Please select your age category:

☐ Under 18 ☐ 18 – 29
☐ 30 - 49 ☐ 50 - 65 ☐ 65+

3. Please respond to the following statements:

I know about both Aurelius Township parks.

☐ Yes ☐ No

I think the parks are well maintained.

☐ Yes ☐ No ☐ Don't know

I feel safe going to the parks.

☐ Yes ☐ No ☐ Don't know

4. Which of the Aurelius Township parks have you visited in the last year?

☐ Glenna Droscha Park (Barnes Rd. and Aurelius Rd.) ☐ Columbia Creek Park (Curtice Rd. near Gale Rd.)

☐ None

5. Which best describes your frequency of park visits?

☐ Regularly ☐ Occasionally
☐ Once or twice per year. ☐ Never

6. If you've visited Glenna Droscha Park, what is most often the purpose of your visit? (Please check all that apply.)

☐ Baseball/Softball ☐ Picnics/family gatherings
☐ Running ☐ Soccer
☐ Walking ☐ Sledding
☐ Bicycling ☐ Enjoy nature/water
☐ Dog walking ☐ Use playground
☐ Basketball
☐ Skateboarding ☐ Other _____

7. Which of these items would you like to see added to Glenna Droscha Park? (Please check all that apply.)

☐ More benches
☐ More picnic tables
☐ Longer walking path
☐ More playground equipment
☐ Another pavilion
☐ Volleyball court (sand)
☐ Memorial monument
☐ Community garden
☐ Signage linking nearby parks

☐ Other _____

8. If you've visited Columbia Creek Park, what is most often the purpose of your visit? (Please check all that apply.)

☐ Baseball/Softball ☐ Picnics/family gatherings
☐ Walking ☐ Soccer
☐ Dog walking ☐ Enjoy nature/water
☐ Use playground

☐ Other _____

9. Which of these items would you like to see added to Columbia Creek Park? (Please check all that apply.)

☐ More benches
☐ More picnic tables
☐ Walking path
☐ Updated bathroom
☐ More playground equipment
☐ Another pavilion
☐ Volleyball court (sand)
☐ Memorial monument
☐ Community Garden
☐ Signage linking nearby parks

☐ Other _____

10. What recreation facilities or amenities would you like to see added to Aurelius Township?

☐ Another park
☐ More bicycle lanes
☐ None

☐ Other _____

Thank you for taking part in this survey. Please return by mail to 1939 S. Aurelius Rd., Mason, MI 48854 or drop in township 24/7 dropbox.



AURELIUS TOWNSHIP

Ingham County

1939 S. Aurelius Road • Mason, Michigan 48854-9729

(517) 628-2093 • Fax (517) 628-3989

Website: www.aureliustwp.org

Aurelius Township

5-Year Parks and Recreation Master Plan

Capital Improvement Program

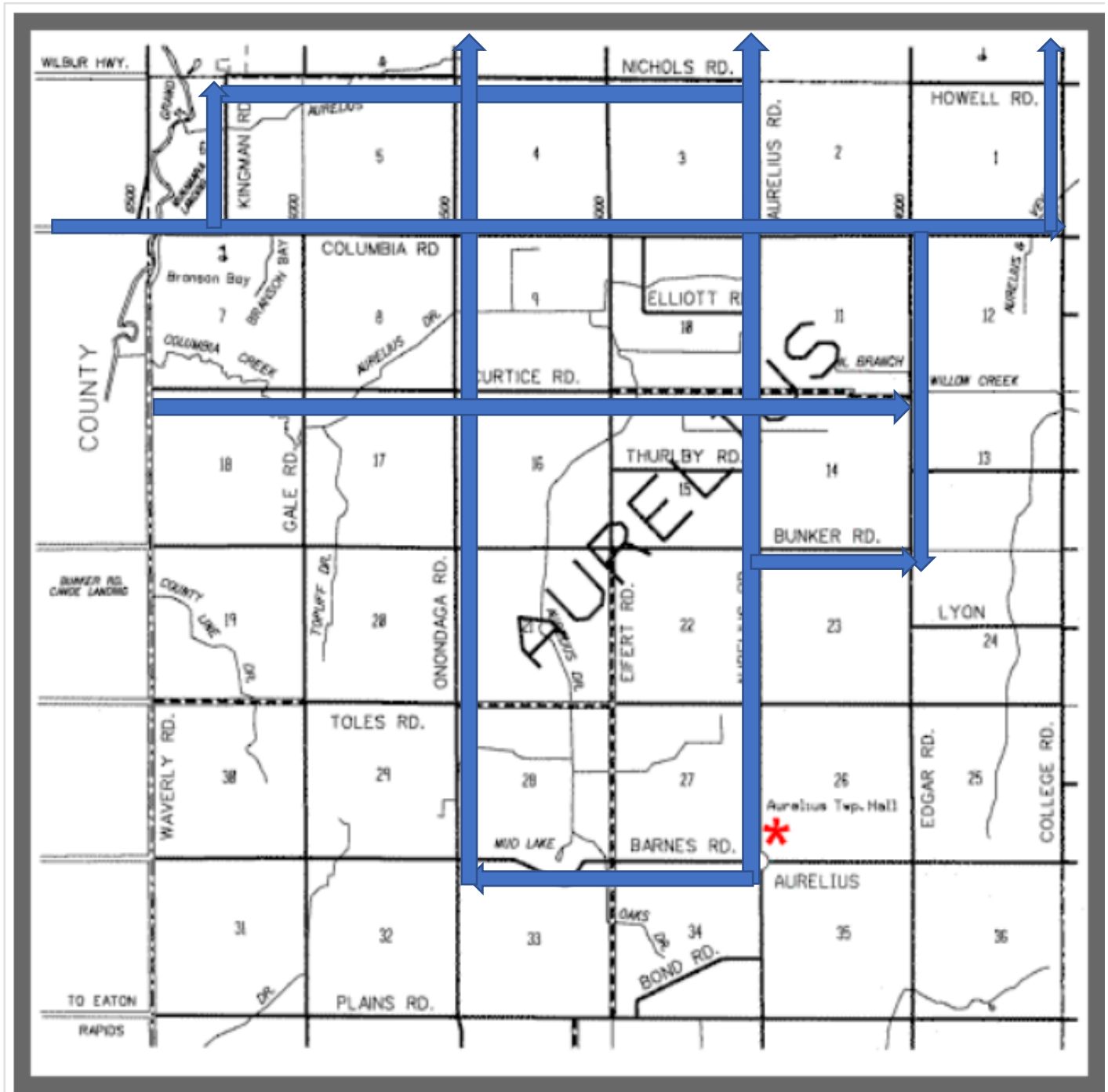
Glenna Droscha Park Improvements

- ② Assist Ingham Co. Parks & Recreation Commission in completion of the Ingham Co. Trails & Parks Wayfinding Signage Grant – Aurelius Township is a stakeholder in this grant
- ② Install more drainage on the north ball diamond
- ② Clean out wooded area on the north and east sides of the township property
- ② Construct a new ADA 24 x 50 x 10 pavilion with tables, grills and trash cans
- ② Construct a new ADA 40 x 50 playground
- ② Update the basketball court to include a pickle ball court
- ② Purchase more property to enlarge park
 - a. Update assessment for Taylor property – 4-acre parcel attached to east of township
- ② Extend/add a second walking trail to the township on the vacant property that runs along the south entrance to the township
- ② Erect a new building to be used for inside basketball, pickle ball and elections
- ② Add an exercise station on the walking path (suggested by Ingham Co. T & P Park Commissioners)

Columbia Creek Park Improvements

- ② Finish Ingham Co T & P Wayfinding – Aurelius Township is part of this grant
- ② Add two children's picnic tables
- ② Spruce-up or erect/install new restroom
- ② Repair/replace fence posts on south side of park
- ② Install fence
 - a. North side: golf course/Aurelius border – clean-up before new fence
 - b. East side: ID boundaries, clean-up and install fence
 - c. West side: bordered by Ingham Co. Road Dept. – clean-up before new fence
- ② Construct a rustic walking path at the north side of the park
- ② Construct a ½ basketball/pickle ball court west of the parking lot
- ② Construct a second small pavilion (24' x 30') on south side of creek adjacent to the parking lot

2018 Ingham County Trails & Park Wayfinding TAP/MDOT Grant



* Aurelius Township Hall
1939 S. Aurelius Road
Mason, MI 48854
Phone: 628-2093

NOTE:
32 miles of roads identified in Aurelius Township, for on-road wayfinding signs